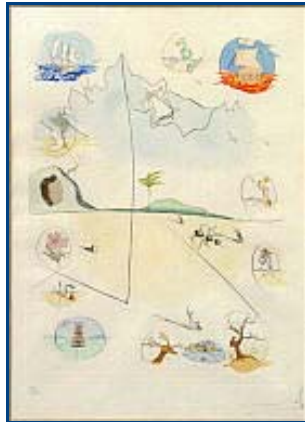


Demo Collection: Object Fact Sheet

Q.1.02.0115



Classification: Fine Art - Print

Title: The Twelve Tribes of Israel (Frontispiece)

Artist: Salvador Dalí *Spanish, 1904 - 1989*

Date: 1973

Medium: Drypoint etching with color stencil (pochoir)

Description: Edition unclear, possibly state (a) on Arches (1 - 195) or state (c) on Moulin de la Dore (1 - 60) or state (d) on Rives (1 - 195)?

Printed by Transworld Art and Ateliers Rigal, as a set of 13 sheets (12 illustrations representing the twelve tribes, plus a frontispiece showing an icon from each illustration), contained in a portfolio of the same name with texts by Abba Eban and published on the occasion of the 25th anniversary of the founding of modern Israel. See additional notes for possible match to later lithograph version?

Dimensions: Paper size (CR): 25 13/16 x 19 7/8in. (65.5 x 50.5cm)

Plate size (CR): 20 1/16 x 14 9/16in. (51 x 37cm)

Paper size (on site): 24 x 18 1/2in. (61 x 47cm)

Catalogue Raisonné: Michler, Ralf and Lutz W. Lopsinger, "Salvador Dalí: Catalogue Raisonné of Etchings and Mixed-Media Prints, 1924 - 1980" (Munich: Prestel, 1993), catalogue no. 618, illustrated.

Additional Notes:

This print is typically sold as one of a set of thirteen in a portfolio, and as a set is routinely estimated at public sale for \$10,000 - \$15,000. However, the frontispiece individually does occasionally appear at auction, finding between \$500 - \$600. For example, this single sheet sold at Susanin's in Chicago (December 2, 2006), Lot No. 6082 for \$550.

Inspection on site suggests this is a lithograph? If that is the case, please note the appendix citation from the CR, explaining the 1974 "poster edition" of 2,000 commemorative lithographic reproductions. Due to the large number of this edition, individual pages from these sets are of negligible value. Note: "These [sets] are distinguished by a menorah (seven-branched candelabrum) in the corner of the sheet."